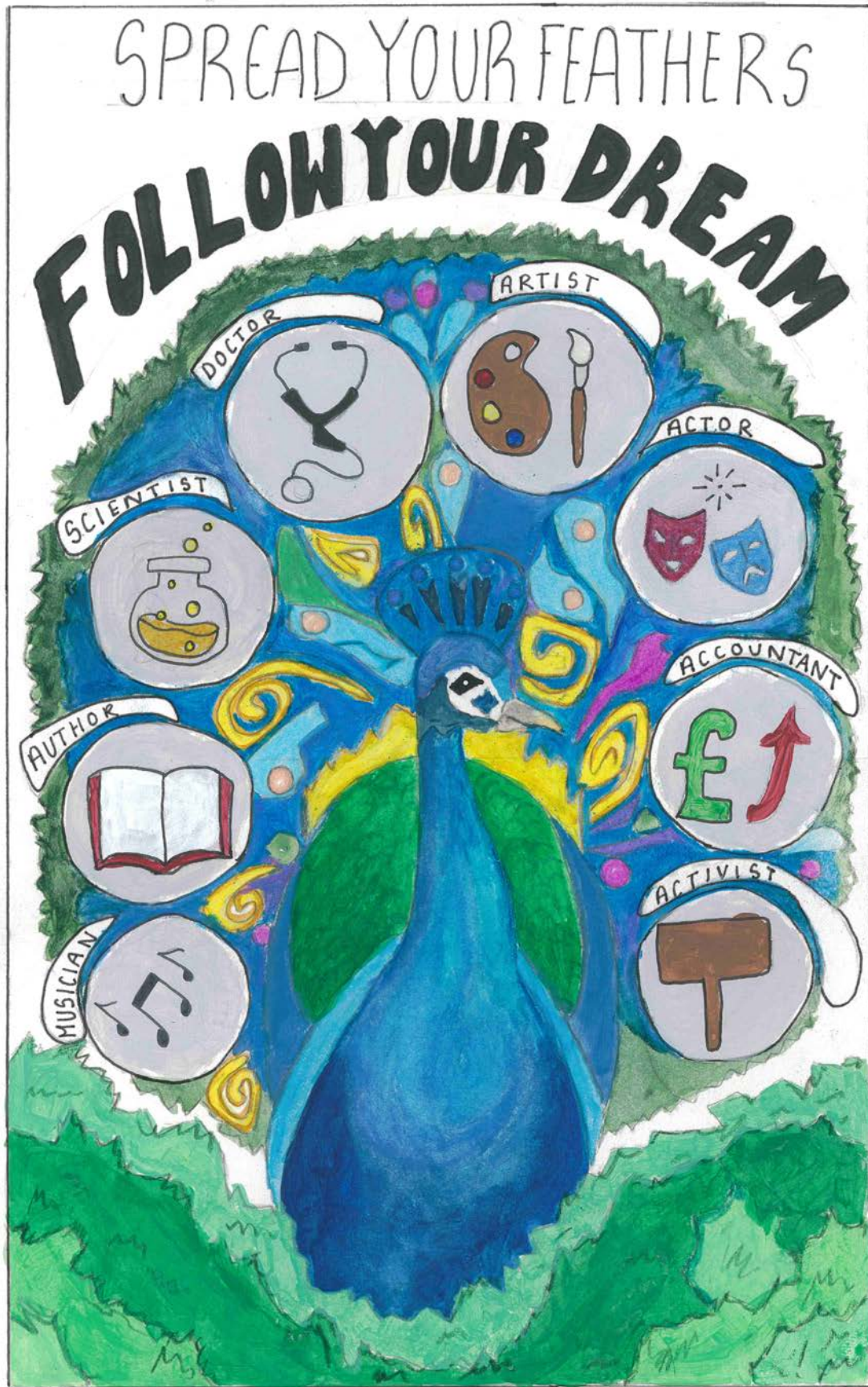




TOWNLEY
EST 1937
GRAMMAR SCHOOL

KEY STAGE
FOUR
CURRICULUM
2024-25



Ella, 9 Persephone



Contents

| | |
|--|----|
| Introduction | 5 |
| Key Stage 4 Curriculum / Curriculum Offer..... | 6 |
| Steps 1, 2 and 3..... | 7 |
| Blocking..... | 8 |
| GCSE Option Choices..... | 10 |
| Chromebooks..... | 10 |

CORE SUBJECTS

| | |
|--|----|
| Biology (AQA) | 12 |
| Chemistry (AQA) | 13 |
| English Language (AQA) and English Literature (Edexcel)..... | 14 |
| Mathematics (Edexcel)..... | 15 |
| Physics (AQA) | 16 |
| Religious Studies (Eduqas)..... | 17 |

CREATIVE LEARNING

| | |
|--------------------------------|----|
| Art and Design (Edexcel) | 18 |
| Dance (AQA) | 19 |
| Drama (AQA)..... | 20 |
| Music (OCR) | 21 |
| Physical Education (AQA) | 22 |

HUMANITIES

| | |
|------------------------------------|----|
| Classical Civilisation (OCR) | 23 |
| Geography (Edexcel B)..... | 24 |
| History (Edexcel) | 25 |
| Latin (OCR) | 26 |

LANGUAGES

(A Modern Foreign Language is compulsory)

| | |
|---|----|
| Modern Foreign Language - French (AQA) | 27 |
| Modern Foreign Language - German (AQA)..... | 28 |
| Modern Foreign Language - Spanish (AQA) | 29 |

STEM

| | |
|-----------------------------------|----|
| Computer Science (OCR) | 30 |
| Design and Technology (AQA) | 31 |
| Engineering (AQA) | 32 |

EXTRA-CURRICULAR AND CHARACTER AND WELLBEING *(not part of our subject options)*

| | |
|---|-------|
| Bronze Duke of Edinburgh Award..... | 33 |
| Extra-Curricular Activities..... | 34 |
| Support for Studying GCSEs / School Values..... | 35 |
| Character and Wellbeing..... | 36 |
| Townley 21c / Work Kindly | 37 |
| Townley Global International Partnerships..... | 34-35 |



TOWNLEY
EST 1937
GRAMMAR SCHOOL

KEY STAGE
FOUR
CURRICULUM
2024-25



Mirabel 9 Aphrodite



Introduction

Welcome to the Key Stage Four Curriculum 2024. The aim of this booklet and the Key Stage Four Curriculum Evening on Wednesday 21st February is to provide you with all the information and guidance you need to make the right subject choices for the crucial next stage of your education. This year's booklet and event reflect the innovative curriculum changes every year 9 student at Townley will be able to explore from September 2024. We believe the 'Townley Advantage' will enhance inclusion and learning opportunities for students in the coming years. This booklet and the evening will provide students alongside parents and carers with the information needed to make well-informed choices about GCSE options and even more holistically define the next two years of your academic career.

The 'Townley Advantage' will complement GCSE options and provide students with an innovative range of further curriculum options to explore alongside chosen GCSE subjects.

We promote a love of learning at Townley, encouraging you to take ownership of your choices, to be inquisitive, curious and have a thirst for knowledge. You now have an opportunity to pursue your passions further and develop a deeper understanding of the subjects you enjoy. To support you in this we provide a broad and challenging curriculum coupled with an exciting array of extra-curricular activities and enrichment opportunities.

As well as the compulsory curriculum of Mathematics, English Language and English Literature, a Modern Foreign Language, Religious Studies and the three Sciences; you will also choose a further three subjects. This provides a balanced programme of study that ensures that after GCSE you will still have the chance to study sciences, languages, humanities, and creative or technical subjects to A-level.

This is the first time you will take responsibility for your subject choices and make decisions that will influence the next stages of your education and your future career. Therefore, you need to think carefully about what you want to do. The key to choosing your options is to select subjects that play to your strengths and that you are inspired by and will enjoy. This is the best guarantee that you will be prepared to apply yourself fully and thus succeed. This booklet should be your starting point for information; it provides you with a clear outline of all the subjects that are on offer, the aims of the course, examination requirements and coursework.

Students will be submitting their choices no later than Friday 15th March 2024.

Every effort is made to enable students to study the subjects that they prefer, but it should be noted the school reserves the right to remove a subject if it is undersubscribed and if there are staffing challenges. Should this situation arise, parents will be informed, and students will be counselled about their choice of other options. Please note that subject information for optional subjects will detail oversubscription criteria.

Whilst the school endeavors to provide staffing for all the classes needed to accommodate our students' choices, changes after 15th March may be harder, or indeed impossible to accommodate. It is important that students are confident about their choices by this date and understand that changes will not be possible beyond the deadline. Classes in GCSE subjects are run according to demand and if only a very small number choose a particular option, it might not be viable. For these reasons, we ask you to choose a reserve subject in case your preferred option is not available.

The two years of preparation for GCSE examinations are the most significant and important to date and GCSE grades are a key element in admission to university or employment. I wish you the best in making informed decisions which will serve you well for the future.

"May your choices reflect your hopes and not your fears"

Nevita Pandya,
Headteacher

From here it's possible

KS4 Curriculum

Townley Grammar School's Key Stage 4 course of study will be informed by the **Compulsory Curriculum**, a selection of **Option Subjects** and our innovative, newly launched **Townley Advantage** courses. All students will study the Compulsory Curriculum, as below. Students will then have a choice of two pathways that will complete their Key Stage 4 course of study. Students must study a total of 30 Credits, reflecting 30 lessons a week.

The Compulsory Curriculum accounts for 21 Credits. The remaining 9 Credits must come from a combination of Option Subjects and Townley Advantage courses.

The Key Stage 4 Curriculum Offer

Step 1 - Compulsory Curriculum

Our Compulsory Curriculum aligns with national requirements as well as going beyond the National Curriculum in its depth and breadth to ensure Townley students develop the intellectualism needed to thrive. The compulsory curriculum includes English Literature and English Language, Mathematics, Triple Award Science, Religious Studies and a Modern Language. These subjects provide students with a broad foundation for further academic growth. We prioritise Modern Languages and Religious Studies for their roles in promoting diversity and oracy, which are integral to our school ethos. As a school we embrace the study of Modern Languages – they create opportunities, broaden horizons and allow individuals to engage more deeply with our diverse and multicultural world, they will build communication, interpersonal, intercultural and public speaking skills. The study of religion and philosophy adds diversity to our curriculum and encourages the development of oracy through considered and thoughtful discussion which is a key element of the course. Religious Studies increases social, spiritual, moral and cultural awareness (SMSC) through the application of philosophical, moral and ethical perspectives to contemporary global issues. Religious Studies also forms part of the statutory curriculum.

Beyond the Compulsory Curriculum, students can choose up to three subjects, ensuring a balanced programme that spans sciences, languages, humanities and creative or technical subjects. Physical Education remains a constant, promoting a healthy lifestyle and the Character and Wellbeing (CWB) course ensures the PSHE (Personal Social and Health Education) and RSE (Relationships and Sex Education) aspects of the statutory curriculum requirements from the DfE (Department for Education) are met. This approach ensures our students are academically prepared and equipped for personal and social wellbeing.

Step 2 Option Subjects

Students can choose 2 or 3 Option Subjects to complement the Compulsory Curriculum outlined in Step 1. This is the first-time students take charge of their subject choices, shaping their education and future career trajectory. It is crucial to approach this decision thoughtfully.

Students should consider subjects that align with their strengths, inspire them and bring enjoyment. Step 3 will depend on:

- *Students choosing 2 Option Subjects will be able to access the Townley Advantage curriculum choices.*
- *Students choosing 3 Option Subjects will be studying 11 GCSE's and will therefore not be able to access the Townley Advantage curriculum.*

Step 3 Townley Advantage

Townley Advantage options empower students to extend beyond the traditional GCSE curriculum. Providing students with the opportunity to delve into areas that might not be part of the standard curriculum but represent a more holistic as well as intellectually rigorous set of options.

Our Townley Advantage courses offer students the time and space to consider a variety of issues. This series of courses will encourage students to question the world around them and to keep pace with the changing nature of our society as they become global citizens and leaders of the future. We hope that these courses will spark interest and nurture passions that linger long after students have completed their secondary education. Townley Advantage facilitates the development of 'Power Skills' related to leadership, teamwork, communication, productivity, and wellness – all critical to a student's intellectual and character development.

STEP 1

| Compulsory Curriculum | |
|---|-----------------|
| English Literature & English Language (4.5) | Mathematics (4) |
| Biology (2) Chemistry (2) Physics (2) | RS (2) |
| Language (3) Choose one from: Spanish, French, German | |
| Non-Examined Physical Education (1.5) | |
| Non-Examined CWB – PSHE, RSE and Character Development | |
| Total credits for Core = 21 Credits (9 Credits Remaining) | |

STEP 2

| Option Subjects | | |
|--|--|-------------|
| Pathway 1 (11 GCSE's) Choose three Option Subjects from the 16 below | Pathway 2 (10 GCSE's) Choose two Option Subjects from the 16 below | |
| Total credits for Pathway 1 = 9 (0 Credits Remaining) | Total credits for Pathway 2 = 6 (3 Credits Remaining) | |
| Classical Civilisation (3) | Design & Technology (3) | Latin (3) |
| History (3) | Engineering (3) | Music (3) |
| Geography (3) | Art (3) | French (3) |
| Dance (3) | Computer Science* (3) | German (3) |
| Drama (3) | Physical Education (3) | Spanish (3) |

STEP 3

| Townley Advantage | | |
|--|---|--------------------------|
| Students who have chosen Pathway 2 can choose Townley Advantage courses below – a total of 30 credits is needed from all sections. | | |
| Language Leadership with TEFL (1) | Digital Futures (2) | Global Perspectives (3) |
| Urban Classroom (3) | Hinduism, Religion & Ethics (1) | P4C (1) |
| Event Management through Sustainable Nutrition (2) | Electrifying the Future through Engineering (1) | DofE (1) |
| Rambert Grades (1) | Ancient Mythology & Ritual (2) | Artistic Development (1) |
| EPQ (1) | Future Finances (1) | Sports Leadership (2) |
| Ancient Greek (1) | AI 4 All (1) | Code & Create (1) |
| STEM Crest Award (2) | Shaping of the Modern World (1) | Esports (2) |
| | Empires: Rise and Fall (1) | Panacea (1) |
| Add credits together – Compulsory Curriculum + Option Subjects + Townley Advantage Subjects = 30 credits | | |

(X) Credits (equivalent to 1 lesson a week)

Blocking

Option Subjects – 3 credits each (3)

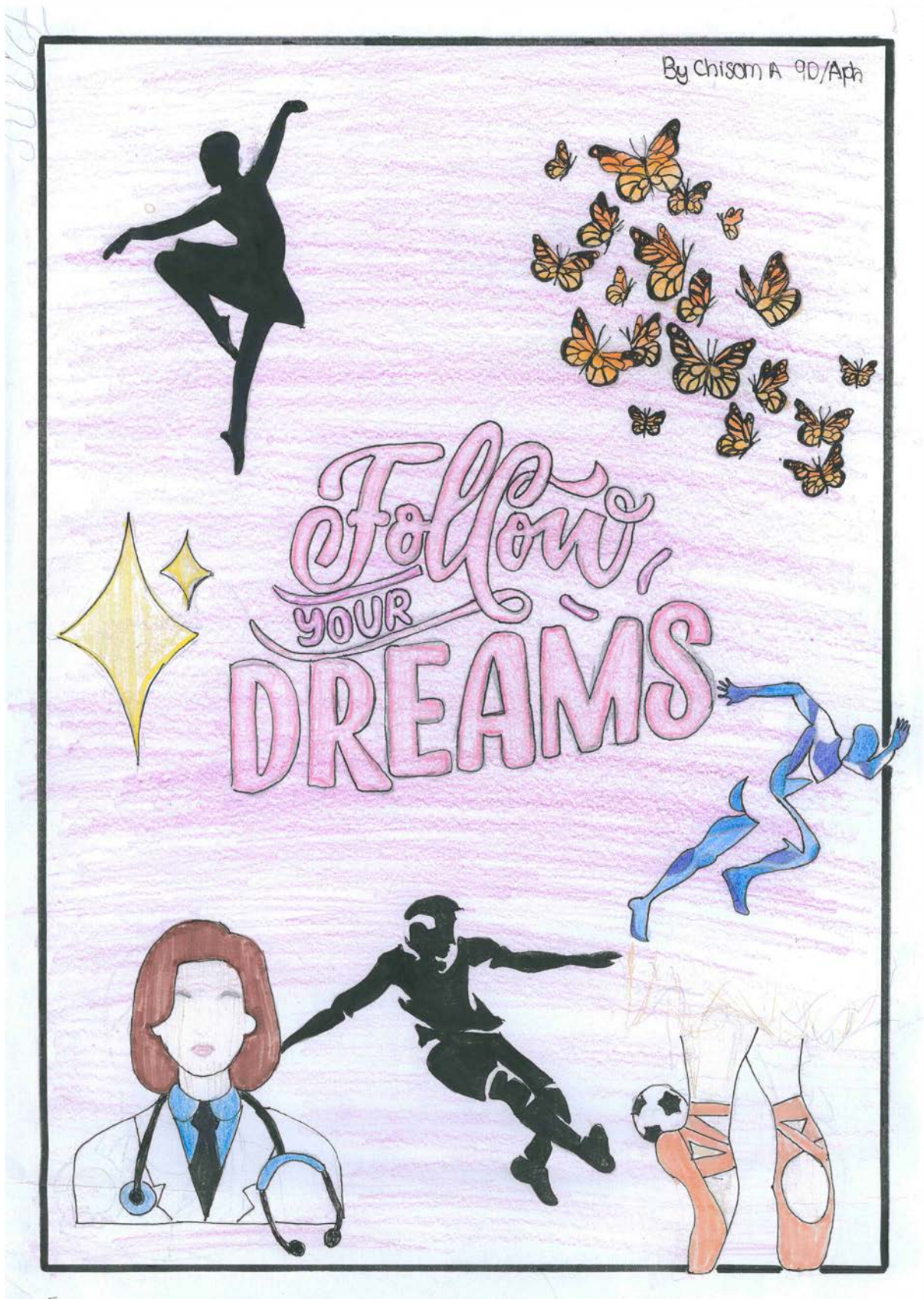
Pathway 1 – 11 GCSEs – students must choose one subject from a maximum of 3 blocks
 Pathway 2 – 10 GCSEs – students must choose one subject from a maximum of 2 blocks
 (Please note you cannot pick more than one subject from a block)

| Block A | Block B | Block C | Block D |
|------------------------|------------------------|------------------------|---------------------|
| Art | Classical Civilisation | Classical Civilisation | Art |
| Classical Civilisation | Computer Science | Drama | Computer Science |
| Computer Science | Design & Technology | Engineering | Design & Technology |
| Design & Technology | Dance | French | Dance |
| Engineering | Drama | German | Drama |
| French | French | History | French |
| Geography | Geography | Latin | Geography |
| History | German | Spanish | History |
| Music | Physical Education | | Physical Education |
| | Spanish | | Spanish |

Townley Advantage

Students who have chosen Pathway 2 (10 GCSEs) can now choose their Townley Advantage subjects.
 All Townley Advantage choices must be chosen from **one** block **only** and they must not be in the same block as option subjects above.
 E.g. Option Subjects – Art from Block A and History from Block C – based on this Townley Advantage subjects can be chosen from only Block B **OR** Block D.

| Block A | Block B | Block C | Block D |
|--|--|--------------------------|---|
| Urban Classroom (3) | Urban Classroom (3) | Global Perspectives (3) | Future Finances (1) |
| Sports Leadership (2) | Sports Leadership (2) | Panacea (1) | Esports (2) |
| Event Management through Sustainable Nutrition (2) | Event Management through Sustainable Nutrition (2) | Code & Create (1) | AI 4 All (1) |
| Language Leadership with TEFL (1) | Empires: Rise and Fall (1) | Rambert Grades (1) | Electrifying the Future through Engineering (1) |
| STEM Crest Award (2) | Shaping of the Modern World (1) | Digital Futures (1) | Ancient Greek (1) |
| Rambert Grades (1) | Digital Futures (1) | P4C (1) | Ancient Mythology & Ritual (2) |
| Digital Futures (1) | Hinduism, Religion & Ethics (1) | Artistic Development (1) | P4C (1) |
| Hinduism, Religion & Ethics (1) | Artistic Development (1) | EPQ (1) | EPQ (1) |
| | EPQ (1) | DofE (1) | DofE (1) |



Chisom A 9 Aprodite



GCSE Option Choices

It is important that students choose their options carefully as decisions made now will affect their future A-Level options.

Students should ask themselves...

- **What subjects am I good at?** – this is the key indicator for likely success in a subject
- **What subjects do I enjoy most?** – this is important as enjoyment and examination success often go hand in hand
- **What are my skills and interests?** – often these can help support students' subjects within school
- **How will I be assessed in the subject?**

Other Advice

Ebaccalaureate – The EBacc is made up of the subjects which are considered essential to many degrees and open up lots of doors. The EBacc is made up of the following subjects: English language and literature, Mathematics, sciences (i.e. 2 of the following Biology, Chemistry, Physics and Computer Science), Geography or History and a language. We do not insist that students take a combination of subjects which would allow them to attain the EBacc qualification.

Chromebooks



*Learning happens at school and home,
and everywhere in between*

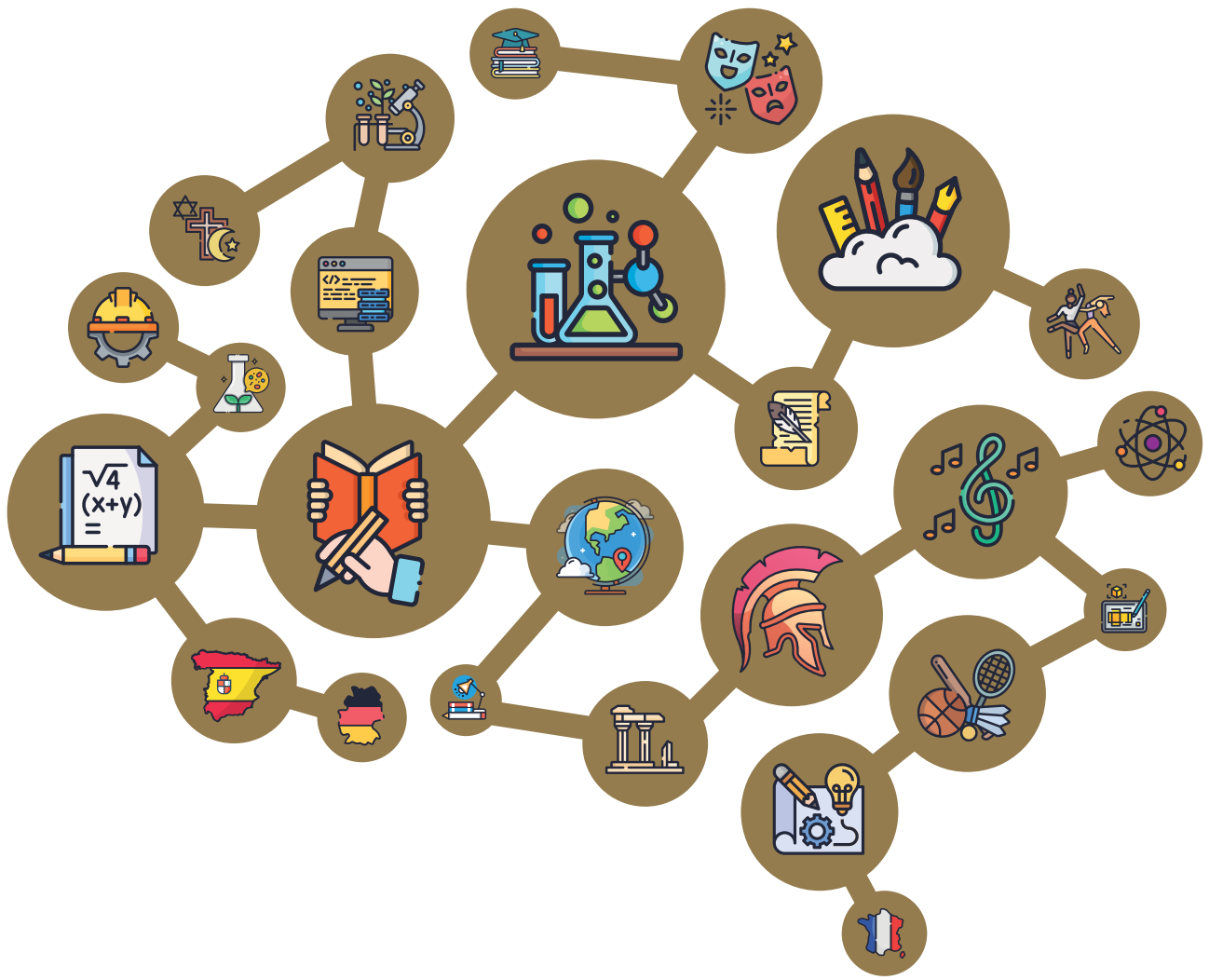


We are delighted to have a Chromebook scheme at Townley Grammar School, an exciting project destined to take our students' learning experience to a new level.

We believe using Chromebooks will enable our pupils to become well-informed, responsible digital citizens and lifelong learners. It is our vision that every student will have access to and own a Chromebook. Our students' daily lives are filled with technology and they are quick to embrace new developments. We want our students to feel at ease in this rapidly changing climate, and make sure they are ready for real world opportunities.

Once our students have access to their own devices, we firmly believe the new scheme will bring enormous educational benefits, and hope parents will get behind this ground-breaking initiative.

A balanced combination of school and home learning is crucial to the future success of young people, and technology opens the door to a new and engaging world that extends effective study way beyond the confines of the classroom. Chromebooks and Google Apps for Education will give our students ready access to information wherever they are, whenever they like. Chromebooks will supplement the existing learning strategies at Townley Grammar, letting pupils study safely, effectively and productively.



KEY STAGE
FOUR
 CURRICULUM
 2024-25

SUBJECTS



Biology (AQA)



SUBJECT INFORMATION

A solid understanding of a range of biological topics is hugely important for students to develop into active global citizens. Issues such as antibiotic resistance, climate change and food security will increasingly shape the future of the planet and students must have a working knowledge of these topics to prepare them, even if they do not go on to enter a biological field of study.

GCSE Biology (8461) is a compulsory course that gives students the opportunity to look at the way their bodies work, the environment in which they live and the impact that humans have upon it through a wide range of topics. This course is suitable for students of all abilities and students will receive a grade from 1 to 9.



ASSESSMENT

Students will sit two papers at the end of the course which will contribute equally to their final grade. The papers will be made up of a combination of question types, including multiple choice, short answer and extended writing.

Paper 1

1 hour 45 minutes. 100 marks – 50%

Topics – Cell biology (topic 1), Organisation (topic 2), Infection and response (topic 3) and Bioenergetics (topic 4).

Paper 2

1 hour 45 minutes. 100 marks – 50%

Topics - Homeostasis and response (topic 5), Inheritance, variation and evolution (topic 6) and Ecology (topic 7).



RELATED CAREERS / A-LEVEL PROGRESSION

The skills that you develop as a Biologist are invaluable in helping you to deduce logical arguments, relate observations to conclusions and evaluate and improve on tasks. The huge variety of potential careers within Biology are too numerous to include here, so here are some of the more popular career fields:

The Medical Field

Physician, Nurse, Chiropractor, Podiatrist, Exercise Physiologist, Nutritionist, Dietician, Pharmacist, Lab Technician, Coroner, Forensic Scientist, Pathologist, Emergency Medical Technician, Pharmacologist, Toxicologist, Biologist.

Animal Science

Veterinarian, Vet Assistant, Zoologist, Marine Biologist, Wildlife Biologist, Fisheries Biologist, Animal Trainer.

Plant Life

Agricultural Research, Botanist, Forest Service, Soil Scientist, Horticulturist.

For further details please go to www.futuremorph.org

A-level entry requirements - Students must gain grade 7 or above to take Biology at A-level.



NEED MORE INFORMATION?

Please speak to your current Biology teacher or email Mrs Marsh: emarsh@townleygrammar.org.uk

Talk to any students in years above you, who will be able to share their experiences with the course, or go on to the AQA website to view the specification in more detail.



Chemistry (AQA)



SUBJECT INFORMATION

GCSE Chemistry is a compulsory subject. Students will receive a grade ranging from 1 to 9. GCSE Chemistry (8462) gives students the opportunity to gain a good understanding of:

- the nature of substances and how they react together
- how Chemistry is used in business and industry
- how our use of raw materials in fuels and manufacturing can affect the global and local environment.

The specification is structured in a way that starts with the fundamental ideas in Chemistry: putting the building blocks in place. This enables students to develop an understanding of topics such as chemical structures and their properties, chemical reactions and how to analyse substances.



ASSESSMENT

This qualification is linear. Linear means that students will sit all their exams at the end of the course. There are two papers each worth 50% of the final mark. Both papers are assessed by a mixture of multiple choice, structured, closed short answer and open response questions. Each paper is 1 hour 45 minutes and is worth 100 marks.

Paper 1 (Topics 1-5):

- Atomic Structure and the Periodic Table.
- Bonding, Structure and the Properties of Matter.
- Quantitative Chemistry.
- Chemical Changes.
- Energy Changes.

Paper 2 (Topics 6-10):

- The Rate and extent of Chemical Changes.
- Organic Chemistry.
- Chemical Analysis.
- Chemistry of the Atmosphere.
- Using resources.

There is no longer any coursework. Instead the Science GCSE papers will contain a number of different types of question which will assess students' practical skills and their understanding of practical techniques.



RELATED CAREERS / A-LEVEL PROGRESSION

A chemistry qualification opens the door to a wide range of careers options, both in and out of the lab. There are endless interesting and rewarding science-based jobs available – these can be in research, outdoors or in other industries students might not have considered.

Job possibilities:

Medicine, Veterinary Science, Chemical Engineering, Research & Environmental. Invent new products and materials, including cosmetics, paints, food and drink, plastics and much more. Solve crime using forensic analysis. Inspire others through teaching Chemistry.

Qualifications in Chemistry offer a variety of career paths ranging from research to teaching to business and finance. For further details please go to:

<http://www.acs.org/content/acs/en/careers/whatchemistsdo/careers.html>

A-level entry requirements- Students must gain grade 7 or above to take Chemistry at A-level.



NEED MORE INFORMATION?

Please speak to your Chemistry teacher, or email Mrs Winter: vwinter@townleygrammar.org.uk

Additional information and support resources are available via the Year 9 Chemistry Google Classroom Hub (sgligex). For a more informal viewpoint, talk to students in Year 12 and 13 studying Chemistry.



English Language (AQA) & English Literature (Edexcel)



SUBJECT INFORMATION

GCSE English Language and English Literature are compulsory subjects taken by every student from Year 10 to Year 11 and are both two-year courses. Students will receive a numerical grade for each course, ranging from 1 to 9. Both the Language and Literature curriculums are built around a process of interleaving topics and self-testing to help build resilience for the challenges ahead. The examination board for Literature is selected specifically for the breadth of diverse texts they offer for the Townley cohort. Curriculum sequencing aims to improve student retention of knowledge, build student confidence and hone a critical and evaluative voice. Our Language curriculum is taught thematically through literature with sequenced skill building in creative writing and oracy. It is through this stage students' critical and creative voice is established with higher levels of sophistication.



ASSESSMENT

Each subject will be assessed through two written exams.

English Literature (Edexcel):

Paper 1: Shakespeare and Post-1914 Literature: 1 hour 45 minutes 80marks (50% of Lit GCSE).

Paper 2: 19th Century Novel and Poetry Since 1789: 2 hours, 15 minutes 80 marks (50% of Lit GCSE).

English Language (AQA):

Paper 1: Explorations in Creative Reading and Writing: 1 hour, 45 minutes 80 marks (50% of Lang GCSE)

Paper 2: Writers' Viewpoints and Perspectives: 1 hour, 45 minutes 80 marks (50% of Lang GCSE).



RELATED CAREERS / A-LEVEL PROGRESSION

Careers that students might choose to pursue: Journalism, Teaching, Law, Speech and Language Therapy, Publishing, Copywriting, Advertising, Public Relations, Civil Service, Police and Armed Forces to name but a few.

Students must gain grade 6 or above to take English Literature at A-level.



NEED MORE INFORMATION?

Please speak with your English teacher, or email Ms Ronan: hronan@townleygrammar.org.uk

“

We asked some students why they think English is so important for lifelong learning...

STUDENT VOICE

“English really helps to build and form your analysis skills for the future”

“Learning English is a bridge to new opportunities and viewing life in different ways”

“Because we read to perceive!”



Mathematics (Edexcel)



SUBJECT INFORMATION

GCSE Mathematics is a compulsory subject, with all students sitting the higher paper at the end of Year 11. Students will receive a numerical grade ranging from 1 to 9 with the majority of students aiming for a level 7 – 9 within the course.

The Mathematics GCSE has been designed to encourage students to be able to apply Mathematics in a more rigorous fashion and recognise the need for problem solving in a range of contexts. The course incorporates new topics not previously covered such as circle theorems and tangents to curves, while covering previous topics in more detail. Students will cover a variety of topics including Number, Algebra, Ratio proportion and rates of change, Geometry and Measures, Probability and Statistics.

The course will give students the necessary skills to facilitate learning and develop ideas across a range of different subjects, especially with a STEM basis.



ASSESSMENT

3 Written papers sat in the summer.

| | |
|----------------------|--------------------------------------|
| Non-calculator Paper | 1 hr 30 mins (33.33% of total mark) |
| Calculator Paper 1 | 1 hr 30 mins (33.33% of total mark) |
| Calculator Paper 2 | 1 hr 30 mins (33.33% of total mark). |



RELATED CAREERS / A-LEVEL PROGRESSION

Careers that students can go into include: Engineering, Finance, Insurance, Data Analysis, Software Design, Astronomy, Scientific Research and the Civil Service.

Job Possibilities:

Acoustic Consultant, Actuary/Actuarial Analyst, Astronomer, Chartered Accountant, Data Analyst/Scientist, Investment Analyst, Mathematical Research Scientist, Software/Sound Engineer, Statistician, Financial Manager/Trader, Civil Service Fast Streamer.

Qualifications in mathematics can lead to employment in a wide variety of sectors such as the petroleum and nuclear industries, business consultancy and operational research, space science, the health sector and many different government departments.

For further details please go to:

<https://www.prospects.ac.uk/careers-advice/what-can-i-do-with-my-degree/mathematics>

Students must gain grade 7 or above to take Mathematics at A-level and a grade 8 or 9 to take Further Mathematics. (An entrance assessment is also required).



NEED MORE INFORMATION?

Please speak to your Mathematics teacher, or email Mr Robinson crobinson33@townleygrammar.org.uk
For a more informal viewpoint talk to students in Year 12 and 13 studying Mathematics.



Physics (AQA)



SUBJECT INFORMATION

Physics is a compulsory subject for all students. At Townley, we follow the AQA specification 8463. A total of eight topics of work are covered by the course (four topics in Year 10, four topics in Year 11, with prerequisite work for the larger topics taught in Year 9):

1. Energy (Years 9 and 10)
2. Electricity (Years 9 and 10)
3. Particle Model of Matter (Years 9 and 11)
4. Atomic Physics (Year 10)
5. Forces (Years 9 and 10)
6. Waves (Years 9 and 11)
7. Magnetism and Electromagnetism (Year 11)
8. Space Physics (Year 11)

The specification is designed to give students the tools and concepts they need to be able to construct a scientific approach to solving problems. Students will learn to ask and answer questions about the fundamental laws that govern natural phenomena. The course encourages students to:

- develop scientific knowledge and conceptual understanding of Physics, including the nature, processes and methods of the subject;
- learn and apply observational, practical, modelling, enquiry and problem-solving skills, both in and out of the laboratory;
- develop an ability to evaluate claims based on the subject through critical analysis of the methodology, evidence and conclusions, both qualitatively and quantitatively.



ASSESSMENT

At the end of the course, students will sit two examination papers, each counting for 50% of the final grade: each paper lasts 105 minutes and is worth 100 marks.

- Paper 1 includes topics 1-4
- Paper 2 includes topics 5-8

The papers are made up of structured questions (including multiple-choice, closed and open answers), calculations and some extended-answer questions in which quality of written communication is assessed.

There is no coursework or continuous assessment; instead, students complete ten Required Practical Activities in their lessons at appropriate points during the course. Each examination paper contains questions relating to some of the ten activities and the skills acquired in performing those tasks. (The questions may be about the equipment, hazards, method and data processing.) While students do not fail the course if they do not complete one of these activities, they may be at a disadvantage in the examination if they do not show awareness of the experiments and techniques.



RELATED CAREERS / A-LEVEL PROGRESSION

Studying Physics can offer pathways to a wide range of industries including engineering, medicine, telecommunications, energy, nanotechnology, astronomy and space exploration, meteorology and climate change, scientific research, education, plus many more.

Students who study Physics at A-Level or above do not always follow careers directly related to the subject. The problem-solving, mathematical, practical, and analytical skills gained are desired in an even broader range of industries, including banking, accountancy, insurance, computing, and consultancy. Further information on careers can be found on the Institute of Physics website:

<https://www.iop.org/careers-physics/your-future-with-physics>

Students must achieve Grade 7 or higher in order to study A-Level Physics at Townley.



NEED MORE INFORMATION?

You are welcome to speak to your Physics Teacher or Mr Llewellyn (mlllewellyn@townleygrammar.org.uk) if you have any further enquiries. Additional information and support resources are available via the Year 9 Physics Google Classroom Hub (mblgh5r). Alternatively, for a more informal viewpoint talk to students in the years above you.



Religious Studies (Eduqas)



SUBJECT INFORMATION

Religious Studies is the study of religious beliefs, behaviours and ethics. It helps you answer questions about the meaning of life, moral dilemmas and why religious faith is important to many people. It also examines how religion has impacted upon the world throughout history and its relevance and influence in the world today. The skills you will develop over the course will help you understand the world today and develop your knowledge and understanding of motives, beliefs and ethical decision making. Different faith perspectives are examined including the atheist and humanist perspective. No religious affiliation is necessary as this is an academic and objective examination of the issues. Your analytic and evaluative skills will however be developed. Learning is through group discussion, presentations, video clips and philosophical enquiry.



ASSESSMENT

There are 3 sections to the course:

1. Religious, Philosophical and Ethical Studies in the Modern world
2. 50% Key topics are Relationships, Life and Death, Good and Evil and Human Rights
3. Christianity 25% This includes beliefs, teachings and practices
4. A world faith 25% This includes beliefs, teachings and practices

Typical questions include:

- | | |
|--|--|
| Do we have a responsibility to help those in need? | Can killing someone ever be the right thing to do? |
| Does religion cause more problems than it solves? | Is the Death penalty ethical? |
| How does extremism develop? | Is there free will in an afterlife? |
| Is there valid evidence for belief in God? | |



RELATED CAREERS / A-LEVEL PROGRESSION

The skills that you will develop over the course are valuable and very well respected by universities as an excellent grounding for any Arts, Social Science or Humanities course. It enables students to develop skills that enhances their study in other subjects such as critical analysis and evaluation and understanding other viewpoints within an issue. The ability to articulate ideas and evaluate their strengths and weaknesses is transferable and highly applicable to any career which involves communication including: Law, Public Relations, Education, Advertising, Marketing, Journalism and the Media.

To do A-level Philosophy and Ethics you will need to achieve a grade 6 at GCSE.



NEED MORE INFORMATION?

Talk to your present RS teacher or email Ms Cox rcox14.303@townleygrammar.org.uk

“

STUDENT VOICE

“I love RS because it is not just an opportunity to express thoughts about your religion but learn about other beliefs and develop an understanding of other people’s views.”

“RS lessons are always interesting and all the RS teachers are very engaging.”

“You get to learn about different religious and non-religious views. I enjoy it and I think you will too.”

“Seeing people’s different perspectives is just so intriguing.”

“I love RS because I enjoy studying interesting and coherent aspects of religions especially topics such as eschatology where I can deeply explore and understand different beliefs.”



Art and Design (Edexcel)



SUBJECT INFORMATION

A GCSE in Art and Design develops students' ability to think creatively and in an independent manner. During the two-year course, students will undertake two coursework projects, in addition to a further assignment set by the exam board. All projects allow students to develop their technical skills whilst encouraging students to develop their own ideas and interests.

The course encourages a wide range of media; these can include painting, print making, photography, sculpture, textiles, mixed media and many others.

All GCSE students have the opportunity to exhibit their work in the Townley Gallery, with some pieces of work being chosen for the Saatchi Gallery website and even for display in the Saatchi Gallery itself.



ASSESSMENT

Assessment for the GCSE course is currently 60% coursework and 40% Externally Set Assignment.

There are 4 assessment objectives:

- AO1.** Develop ideas through investigations, demonstrating critical understanding of sources.
- AO2.** Refine work by exploring ideas, selecting and experimenting with appropriate media, materials, techniques and processes.
- AO3.** Record ideas, observations and insights relevant to intentions as work progresses.
- AO4.** Present a personal and meaningful response that realises intentions and demonstrates understanding of visual language.



RELATED CAREERS / A-LEVEL PROGRESSION

There is an increasing demand for creative and innovative people in industry and business. The number and variety of courses available to students wishing to continue their studies to degree standard is wide and exciting. These include: Architecture, Interior Design, Photography, Printmaking, Film/TV/Audio Visual, Illustration, Fashion Design, Model Making for Film/TV, Special Effects and Animation, Textiles, Theatre Design, Jewellery Design, Exhibition/ Gallery/ Museum Display, Art History, Heritage and Gallery careers, Painting, Sculpture... to name but a few.

Entry requirements for A-level Art and Design - grade 6 at GCSE.



NEED MORE INFORMATION?

Talk to your Art teacher or Ms Ona de la Blanca aonadelablanca@townleygrammar.org.uk

Talk to any students in Year 10, 11 or Year 12 - they will be able to answer your questions from a student perspective. You could ask the Art prefects in Year 13, as they have been through 4 years of intensive art!

SELECTION CRITERIA IN THE EVENT OF OVER SUBSCRIPTION:

Drawing skills will be taken into account, as well as attitude to learning in Year 9.

“

STUDENT VOICE

“It gives you an opportunity to express yourself in a way that you don't get in other subjects.”

“It's such an amazing way to continue something you enjoy and learn how to express yourself through art. In art we learn about different styles and techniques. I love it.”



Dance (AQA)



SUBJECT INFORMATION

Dance is a powerful and expressive subject, which encourages students to develop their creative, physical, emotional and intellectual capacity. This subject recognises the role of dance in young people's lives and students will study a range of dance styles. They can choose any style to perform and choreograph in, providing it meets the assessment criteria. The study of the anthology of professional works will develop their ability to critically appraise dances of different styles and cultural influences and provides a springboard for engaging practical tasks. Students must have a passion for Dance!



ASSESSMENT

Component 1 - Performance and Choreography

- Performance** · Set phrases through a solo performance (approximately one minute in duration).
Duet/trio performance (three and a half minutes in duration)
- Choreography** · Solo or group choreography – a solo (two to two and a half minutes) or a group dance for two to five dancers (three to three and a half minutes)

How it's assessed - Internally marked and externally moderated

- Performance** · 30% of GCSE, 40 marks (15 marks for set phrases and 25 marks for duet/trio performance)
- Choreography** · 30% of GCSE, 40 marks. Total component 60% Non-exam assessment (NEA) marked by the centre and moderated by AQA.

Total component 60% Non-exam assessment (NEA) marked by the centre and moderated by AQA.

Component 2 - Appreciation

Knowledge and understanding of choreographic processes and performing skills, Critical appreciation of own work, Critical appreciation of professional works.

How it's assessed - 40% of GCSE Written exam: 1 hour 30 minutes 80 marks

Questions based on students' own practice in performance and choreography and the GCSE Dance antholog.



RELATED CAREERS / A-LEVEL PROGRESSION

Careers – Teaching, Performer, Choreographer, Community Dance Worker, Costume/Set Designer, Arts Officer, Dance Film Maker, Movement Therapist, Dance Journalist, Dance Photographer, Youth Worker, Management Specialist. Dance GCSE will be of good use in all professions where students need excellent organisation, motivation and people skills. **Students will need a grade 6 to progress to A-level.**



NEED MORE INFORMATION?

Talk to the current GCSE Students. Talk to your Dance teacher or email Miss Prescott:
kprescott@townleygrammar.org.uk for more detailed information.

SELECTION CRITERIA IN THE EVENT OF OVER SUBSCRIPTION:

Effort and behaviour grades from KS3 will be taken into consideration.

“

STUDENT VOICE

“When coming to Townley, one of my favourite aspects about the school was the fact that dance was a subject. From Years 7 to 9, I have enjoyed the freedom in which you have to be creative with dance as you can explore ideas through movement and stretch yourself to the best of your ability. It is inspiring to find that you can make a dance out of anything; testing your imagination and skill when working from various stimuli! Dance is an active subject too, which is a nice change to the timetable because it really allows you to become physically involved in the subject. If you enjoy dance as much as I do, I would recommend taking it for GCSE.”



Drama (AQA)



SUBJECT INFORMATION

GCSE Drama is an excellent course to develop confidence, successful teamwork skills and creativity. We study and develop devising skills as well as looking at characterisation, stagecraft and set plays, ranging from Arthur Miller, Caryl Churchill and Willy Russell. Practical coursework tasks are set throughout the two years. They include projects taking a scripted play from page to stage and creating a devised performance from an original stimulus.

The written examination requires students to demonstrate their knowledge of practical drama skills. Students have to write about their own practical work undertaken during the course, as well as their set play text and theatre productions students have been taken to see.

NB: There is a small charge for theatre trips (approximately two per year). Please be aware of this when opting for this course.



ASSESSMENT

60% practical coursework completed during the course,
40% written examination (Summer term, Year 11).



RELATED CAREERS / A-LEVEL PROGRESSION

Drama is an outstanding subject to have for any career. Employers, universities and colleges like students who have Drama skills as they are confident, can work effectively in a group and can present themselves well.

Students will need a grade 6 to progress to A-level.



NEED MORE INFORMATION?

Email Mr French on jfrench@townleygrammar.org.uk

SELECTION CRITERIA IN THE EVENT OF OVER SUBSCRIPTION:

Effort and behaviour grades from KS3 will be taken into consideration.

“

STUDENT VOICE

The ability to speak correctly with confidence and strength is a key skill which I have developed greatly in drama since I joined Townley. Therefore, choosing drama as a GCSE option was not a question but a commitment to me because I knew that as a subject, drama could hugely improve my confidence and also my presence whether I chose to pursue drama as a subject or later in life.

For GCSE, drama met my expectations and currently I improved my writing skills through determination and support. Drama is an outstanding subject which helps each student to communicate with their peers but also better their creativity and independence.

Currently, I am multi-rolling in scenes which is something I never believed that I could achieve. You should really think about taking drama for enjoyment and achievement because you don't realise just how much it can help you.”



Music (OCR)



SUBJECT INFORMATION

Music is an important part of all our lives, and something which we turn to at many of our most important moments, as well as being a soundtrack to many aspects of our everyday lives. Understanding how it is put together, and learning to create it, is a wonderful and rewarding study, which can lead to great personal fulfilment, expression and enjoyment. Research also shows how Music can be an important subject to enhance overall academic achievement, in addition to developing creativity, self-discipline, perseverance, resilience and teamwork, all of which are prized by potential employers.

A GCSE in Music encourages the development of secure musical skills and knowledge building on the material covered in Years 7 to 9, with an increased focus on individual creativity (composing) and performing as a soloist and in a small group. A broad range of musical styles form the basis of the four Areas of Study – from Western classical music to music written for films and computer games, conventions of pop and rhythmic traditions from around the world. These are explored in a variety of ways, both practical and theoretical, in order to prepare for the final listening examination.

GCSE Music is suitable for any student who has an interest in and aptitude for the subject, regardless of how much experience they have or what level they have previously reached on an instrument. Prior study (such as graded exams) is naturally helpful but not essential. It is however highly recommended that all GCSE Music students do take individual music lessons on an instrument or voice to support the development of the skills required for the performing coursework. Lessons can be arranged at school if required through the department's team of visiting peripatetic music teachers.



ASSESSMENT

| Component | Title | Weighting |
|-----------|--------------------------------------|-----------|
| 1 | Composing Coursework | 30% |
| 2 | Performing Coursework | 30% |
| 3 | Listening and Appraising Examination | 40% |



RELATED CAREERS / A-LEVEL PROGRESSION

Music performance, Composition, Arranging, Arts management, Sound/Production Engineer, Tour/Events Management, Agent, Music Journalist, Copyright Law, Teaching (instrumental and classroom), Advertising, Media, Music Therapy, Community Arts Projects.

Students will need a grade 6+ in GCSE Music to study Music or Music Technology at A-level.



NEED MORE INFORMATION?

Speak to your Music teacher or email Mrs Bryant (ebryant@townleygrammar.org.uk) to find out more or ask any questions.

SELECTION CRITERIA IN THE EVENT OF OVER SUBSCRIPTION:

In the event of over-subscription, students will be selected based on their overall ability in Music.

“

STUDENT VOICE

“Taking Music was a great choice as I got to explore my style as well as other styles of music and their key characteristics. There are so many students of different abilities so don't doubt yourself!”
“Music is a rewarding choice because of its encouragement of appreciation, creative liberty and the non-judgemental nature of the classes gives you freedom to really enjoy yourself.”



Physical Education (AQA)



SUBJECT INFORMATION

GCSE Physical Education provides students with the knowledge and understanding of how to live a healthy and active lifestyle, enabling them to make informed choices about their own physical development.

In GCSE Physical Education lessons, students will cover both practical and theoretical components. The theory aspects will form the basis of students' knowledge enabling them to answer the exam questions. These topics will also help students to become more competent in their assessed practical performance.

In practical lessons students will participate and be assessed in a wide variety of sports, for example; netball, handball, dance, tennis, athletics, climbing, badminton, canoeing/kayaking and trampolining. You may also choose to be assessed in sports which you participate out of school for example swimming, cycling or rowing. It is expected that you will take part in extra-curricular clubs both in and out of school to improve your skills in a variety of sports.



ASSESSMENT

Component 1: The human body and movement in physical activity and sport- written paper (30%)

Component 2: Socio-cultural influences and well-being in physical activity and sport- written paper (30%)

Component 3: Practical performance in physical activity and sport- non examination assessment (40%)



RELATED CAREERS / A-LEVEL PROGRESSION

Physiotherapy, Sports Scientist, Sports Journalism, Sports Therapist, Nutritionist, Sports Psychologist, Sports Coaching, Physical Education Teacher, Armed Forces, Emergency Services, Leisure & Tourism Industry, Sports Development.



NEED MORE INFORMATION?

Speak to your PE teacher, or email Mrs Hawkey (shawkey@townleygrammar.org.uk) to find out more or ask any questions.

SELECTION CRITERIA IN THE EVENT OF OVER SUBSCRIPTION:

Students will be selected based on their overall achievement in PE as well as commitment to extra-curricular clubs both in and outside of school.

“

STUDENT VOICE

“Having participated in physical activities from a young age, GCSE PE was one of my first choices. The course has enabled me to develop my skills in sports I frequently do as well as others that I may not have thought about participating in. An example of this is the rock climbing trip at PGL which I used as a sport to be assessed in. The theory exam content also developed my understanding of sports, as well as improving my performance. On top of this, it has proved to be useful in other subject such as Biology and extra-curricular activities.”

“I chose PE because I have always enjoyed physical activity but taking PE for GCSE has allowed me to participate in sports that I'd never been good at before and enabled me to develop my skills. As well as this, I have been able to deepen my understanding of the sport I partake in outside of school. The theory aspect of the course has been intriguing while covering a wide range of topics and has sparked interest in a future sports related career. We have also learnt more about inspiring sports stars and current sporting benefits and problems which has helped me.”



Classical Civilisation (OCR)



SUBJECT INFORMATION

Students who choose this course will have the opportunity to examine the mythology, history, literature, archaeology, art and society of ancient Greece and Rome. If you decide to pursue Classical Civilisation, you will develop an understanding of how people lived in the Classical World by studying their myths and stories, as well as a range of written and material sources.

No prior knowledge or experience of ancient subjects is required. Only an interest and enthusiasm in the Classical World. The skills required in Classical Civilisation are similar to those used in History and English, so if you enjoy those subjects then you may enjoy Classical Civilisation.

The course and textbook that you can choose to study was designed and developed in part by Townley's own Classical Civilisation teaching staff, working with the OCR exam board. The course comprises two modules:

Women in the Ancient World: For thousands of years, Classicists have focused their studies on the lives and stories of men. This module enables you to study the lives and stories of women in Greek and Roman society and culture. From queens to slaves and from wives to warriors, this module looks at a broad range of women from history and myth.

War and Warfare: War is one of the most significant aspects of human behaviour. This module covers different aspects of warfare in the ancient world, including the purposes, conduct and effects of war, as well as how the military impacted upon wider society.



ASSESSMENT

Each of the two modules above are given equal weighting and will comprise 50% of your total GCSE grade. Each module is assessed by a 90 minute exam, sat in the Summer Term of Year 11. These exams will include a mixture of short-answer and essay questions.



RELATED CAREERS / A-LEVEL PROGRESSION

Classical Civilisation is a multi-disciplinary subject, containing elements of English Literature, Art, Architecture, History, Philosophy, Archaeology, Religious Studies and Politics.

The study of any Classics subject would benefit those students interested in, among others, a career in Law, the Civil Service, Politics, Media, Finance, Teaching, Art, Medicine, Publishing, Journalism and working in museums and archives.

The subject is available as a subject at A-level, although it is not necessary to have studied the GCSE beforehand. View the 6th Form booklet.



NEED MORE INFORMATION?

If you would like any more information on this course, please feel free to contact Mr Hancock-Jones at rhancock@townleygrammar.org.uk

SELECTION CRITERIA IN THE EVENT OF OVER SUBSCRIPTION:

High achievers and those with high effort grades in History and / or English will be given priority.



STUDENT VOICE

"I love learning about the lives people had! The drama is like a historical Eastenders."

"I would recommend Classical Civilisation because it is a really engaging subject that furthers our debating abilities and builds our confidence to talk in class. It's also really fun and everything we learn can relate to other subjects".

"It is really interesting to learn about the history of ancient civilisations through a variety of sources. The women module deals with modern problems like sexism".



Geography (Edexcel B)



SUBJECT INFORMATION

Geography GCSE at Townley Grammar School follows an exciting, forward thinking syllabus looking at a range of global issues; such as water supply, extreme polar climates, development issues and living spaces. Studying Geography GCSE will leave students in a strong position to study a vast range of subjects at A-level and beyond, as it is classed as a Science and a Humanities subject.

Geography was recently described by the Princes Trust Institute as a subject that, 'points us towards solutions to some of the biggest problems of our age' (Telegraph 19/11/11). So if you want to get involved in the world you live in and potentially change what is going on around you, then Geography is a subject you should consider.



ASSESSMENT

This GCSE comprises of three components:

Component 1: Global Geographical Issues, 37.5% of the award. This component will investigate physical and human processes that influence our changing world. Students will study earthquake and volcanic activity, development dilemmas and the challenges of an urbanising world.

Component 2: UK Geographical Issues, 37.5% of the award. This component will explore the UK's evolving physical and human landscapes. Students will take part in fieldwork opportunities to support this component.

Component 3: People and Environment Issues – Making Geographical Decisions, 25% of the award. Students will investigate our biosphere and resource consumption to develop an awareness and solutions to create a more sustainable world.



RELATED CAREERS / A-LEVEL PROGRESSION

Having studied Geography students can go into jobs in a wide range of careers for example: Finance, Law, Journalism and Accountancy which build on the skills used in Geography or into careers specifically connected to the subject such as environmental consultancy, weather / climate careers and development work.

A grade 6 in Geography GCSE is needed to take Geography at A-level.



NEED MORE INFORMATION?

You may also speak to your Geography teacher as they will know you best. If you would prefer some general information, email Mrs Bannister: sbannister@townleygrammar.org.uk

SELECTION CRITERIA IN THE EVENT OF OVER SUBSCRIPTION:

KS3 effort and behaviour grade for Geography will be taken into account.

“

STUDENT VOICE

“I think Geography is a great subject as you learn about the world and what is happening right now and how it impacts you. It is a very interesting subject that helps you understand why certain world situations actually happen and what can be done to prevent these global issues from getting worse.”

“Geography GCSE has made me realise just how interconnected we all are and the impacts we as humans have on our world. I find the subject inspiring and it makes me feel like I can make a difference”.

“I believe that Geography is an incredibly important subject, as it allows us to understand and appreciate the world we live in. I enjoy learning about different global and environmental issues which I find very interesting. I leave each lesson feeling like I have learnt something new!”



History (Edexcel)



SUBJECT INFORMATION

History spans all cultures, eras, seasons and environments and is an immovable factor that can be called upon for knowledge and insight into how the world got to the point it is at now and how it will continue to develop in future. It will fire your curiosity and imagination, moving and inspiring you with the dilemmas, choices and beliefs of people in the past. It helps you to ask and answer questions of the present by engaging with the past.

The Edexcel GCSE spans a 1000 year period and provides a varied and exciting course. The skills that you will develop over the course are valuable and transferable beyond the study of History. Your skills of analysis, debate and evaluation will all be developed, along with your ability to write coherently and convincingly. These skills are useful for a wide range of future areas of study and careers. Lesson activities are varied and include discussion, presentations and debate.



ASSESSMENT

There are 3 papers which are all examined at the end of Year 11:

- 1. Crime and Punishment in Britain, c1000 – present.** In this unit we will study the nature of crime and law enforcement from the medieval period right up to the modern day. Topics include trial by ordeal, the establishment of the court system, the crime of witchcraft and the abolition of the death penalty. Our in depth case study looks at Whitechapel and the Jack the Ripper murders. We also go on a trip to Whitechapel for a walking tour. This paper is worth 30% of the qualification
- 2. Section 1. Early Elizabethan England 1558 - 88.** Our British depth study looks at the challenges Elizabeth I faced including religious dissent, her cousin Mary Queen of Scots and possible Spanish invasion. We also explore Tudor society at the time and the voyages of discovery to the New World.
Section 2. Superpower relations and the Cold War 1941-91. You will look at the relations between the USA and USSR and how the world nearly descended into nuclear war in the Cuban Missile Crisis. We also look at how a city was physically divided for nearly 30 years by the Berlin wall. The course ends with the collapse of communism and the USSR. This paper is worth 40% of the qualification.
- 3. The USA, 1954 – 75: conflict at home and abroad.** We study the struggle for Black Civil Rights, US involvement in the Vietnam War and protest against the Vietnam War. This paper will utilize your source skills that you have been practicing in Key Stage 3. This paper is worth 30% of the qualification.



RELATED CAREERS / A-LEVEL PROGRESSION

The knowledge and transferrable skills which you will develop over the two year course are valuable and very well respected by universities and a range of disciplines. History is also useful for a wide range of future careers. Many students study History and then go on to work in the Legal Field, Accountancy, Journalism, Teaching, Research & Politics.

To do A-level History you will need to achieve a grade 6 at GCSE.



NEED MORE INFORMATION?

Talk to your present History teacher or email Ms O'Hanlon kohanlon1@townleygrammar.org.uk You may also talk to any students in Year 10 and Year 11 or ask the History prefects in Year 13.

SELECTION CRITERIA IN THE EVENT OF OVER SUBSCRIPTION:

Effort and attainment grades from Year 9 will be taken into consideration.



STUDENT VOICE

"Since taking History I feel I have enriched my general knowledge, as well as applying analytical source skills to modern sources. I find the lessons very engaging and I feel the support offered is excellent not allowing anyone to fall behind." "The content is so interesting and once you get a hand on the questions, it is easy to apply your knowledge and it will definitely become one of your favourite subjects." "I like History because having an understanding of how the world used to work brings you an understanding as to why the world is the way it is now. You really get to see how society has developed over time and makes you grateful for the conditions you live in."



Latin (OCR)



SUBJECT INFORMATION

Students who choose to pursue GCSE Latin will have the opportunity to enhance their understanding of the Latin language and the society, values and literature of the ancient Romans.

By working in a naturally small cohort, chosen only by those who did Latin in Years 8 and 9, students will be able to make use of one-to-one teacher support and resources designed for work online, in-person and in small groups.

Students will continue to develop their skill in Latin translation, broadening their understanding of more complex vocabulary and grammar so that they can translate genuine ancient Roman texts into English and appreciate them for their beauty and cultural significance. The GCSE also includes a civilisation component, which gives students the chance to study Roman values and how this impacted what they did for fun, as well as the lives of the Romans in Britain.



ASSESSMENT

3 written exams, sat in the Summer of Year 11:

- **Latin Language** (tests your ability to read and understand unseen passages of Latin) – 90 minutes – 50% of the total mark.
- **Verse Literature** (tests your understanding of a set text that you will have studied in class) – 60 minutes – 25% of the total mark. Your set text will be sections of Virgil's Aeneid, which tells the story of the fall of Troy.
- **Literature and Culture** (tests your understanding of two areas of Roman culture, includes the study of some Roman texts in English translation as well as visual sources) – 60 minutes – 25% of the total mark. Your set areas of Roman culture will be Roman Entertainment and the Romans in Britain.



RELATED CAREERS / A-LEVEL PROGRESSION

"... we know that those who have studied the ancient languages are never, in fact, short of job-offers. A top asset-manager recently told me that his firm always employed classicists: they sold more. If Richard Dawkins is right, that is because 'what Classics has always done is just teach people how to think.'" Dr Peter Jones

As this quote suggests, a GCSE in Latin has the potential to open many doors for you in the working world. Latin improves your ability to communicate, to solve problems and to think critically. Common career paths include: Law, Medicine, Journalism, Civil Service, Museum/Gallery Curation, Teaching, Marketing and Accountancy and so much more.



NEED MORE INFORMATION?

If you would like any more information on this course, please feel free to contact Mr Cowper at tcowper@townleygrammar.org.uk

SELECTION CRITERIA IN THE EVENT OF OVER SUBSCRIPTION:

High achievers and those with high effort grades in Latin will be given priority.
GCSE Latin is only available to those students who have studied it in Year 8 & 9.

“

STUDENT VOICE

"Latin has allowed me to immerse myself in [Roman] history, with exciting games encouraging class interaction and the expansion of knowledge that opens new doors for me."

"I have enjoyed taking Latin as the class is fairly small so the learning can be more specific to our needs and what we need to work on."

"Latin has given me the opportunity to really understand the rules which form the basis of a plethora of languages – I am now able to pick up languages more easily."



French (AQA)



SUBJECT INFORMATION

A GCSE course in French allows students to develop their ability to understand the spoken and written language and express themselves both orally and in writing. The topics studied include: identity and culture; local, national, international and global areas of interest; current and future studies and employment.

Students' skills will be developed through a variety of activities, including giving presentations, group work, independent research, pair work and the use of ICT. Students will need to be prepared to develop their active and passive vocabularies and their knowledge, understanding and application of grammar. There is also an opportunity to participate in trips. This academic year we are running a Paris trip, and previously we have run several exchanges with Institut St Joseph, Roquebrune-Cap-Martin, south of France and an exchange organized around a Francophone competition with Mayo College, Ajmer, India. We also take part in events such as the study days at the British Film Institute.



ASSESSMENT

Please note that your child will be sitting a new GCSE specification, with first exams commencing in 2026.

Paper 1: Listening exam – 25% of GCSE Section A – listening comprehension questions in English, to be answered in English Section B – Dictation where students transcribe short sentences.

Paper 2: Speaking exam – 25% of GCSE - Speaking using clear and comprehensible language to undertake a role-play - Carry out a reading aloud task - Talk about visual stimuli.

Paper 3: Reading exam – 25% of GCSE Section A – reading comprehension questions in English, to be answered in English Section B – translation from French into English.

Paper 4: Writing exam – 25% of GCSE - Writing text in the language in a lexically and grammatically accurate way in response to simple and familiar stimuli -Translating from English into French.



RELATED CAREERS / A-LEVEL PROGRESSION

French is highly regarded by universities and language knowledge is relevant to a number of degree courses, including History, Literature, Politics, Law and Music. Studying French at A-level also opens up study opportunities at renowned French universities and business schools, ranked among the top higher education institutions in Europe and the world.

French is both a working language and an official language in many organisations such as of the United Nations, the EU, UNESCO and NATO. It is a world language with more than 220 million people speaking French on the five continents, making it a language for the job market, a language for travel and a language for careers in Business, Finance, Law, Sales and Marketing, Engineering, Tourism, Leisure, Public Sector, International Institutions, Teaching (Primary and Secondary), Translating, Interpreting and the Media.

To continue studying French at A-level, students need to have a grade 6 or above at GCSE.



NEED MORE INFORMATION?

Speak to your French teacher or alternatively email Miss McCabe: emccabe@townleygrammar.org.uk

“

STUDENT VOICE

'I chose French because I want to become bilingual, something which is very useful in International Relations. Also by learning French, I am constantly engaging my mind and every time I learn something new, I feel I am more able to play with the language. Learning French also gives me a greater understanding of language as a whole.'

'I chose GCSE French because I think that French is a very useful language which is spoken by a lot of people internationally. It's fun and interesting to learn about another culture and I find listening to French music particularly enjoyable. In addition, French is similar to other European languages so in the future it will be easier for me to learn other languages like Spanish or Italian.'

'I took French GCSE because I like to have the ability to communicate with people globally. I love to learn new vocabulary and I love to understand new structures so that I can form sentences. I think French will help me in the future because as someone who wants to travel, it will allow me to meet new people. It could also open doors for me in terms of career.'



German (AQA)



SUBJECT INFORMATION

The GCSE course in German allows students to develop their ability to understand the spoken and written language and express themselves both orally and in writing. The topics studied include Identity and culture; local, national, international and global areas of interest; current and future studies and employment. Students' skills will be developed through a variety of activities, including giving presentations, group work, independent research, pair work and the use of AI. Students will need to be prepared to develop their active and passive vocabularies and their knowledge, understanding and application of grammar. There is also an opportunity to participate in trips organised by the department, such as the German Culture, Mythology and STEM focussed trip to the Rhineland area of Germany. Furthermore, we offer events such as the study days at the British Film Institute and the German Embassy Career Fair.



ASSESSMENT

Please note that your child will be sitting a new GCSE specification, with first exams commencing in 2026.

Paper 1: Listening exam – 25% of GCSE

Section A – listening comprehension questions in English, to be answered in English

Section B – Dictation where students transcribe short sentences

Paper 2: Speaking exam – 25% of GCSE

- Speaking using clear and comprehensible language to undertake a role-play,

- Carry out a reading aloud task, - Talk about visual stimuli

Paper 3: Reading exam – 25% of GCSE

Section A – reading comprehension questions in English, to be answered in English

Section B – translation from German into English

Paper 4: Writing exam – 25% of GCSE

- Writing text in the language in a lexically and grammatically accurate way in response to simple and familiar stimuli, - Translating from English into German



RELATED CAREERS / A-LEVEL PROGRESSION

Do you aspire to a career in Engineering / Banking / Science / Arts / History / Music / International Business... to name a few? Over the past centuries, the German language has been the medium with which some of the most creative minds and greatest thinkers globally, such as Copernicus, Benz, H.v. Bingen, Beethoven, Mozart, Schweitzer and Einstein, communicated.

German is the second most important language in the field of science. Due to its continuous success on the global market, Germany is also the world's third-largest exporter of goods, including vehicles (Mercedes, Porsche), chemical products, chocolate, and computers, making it one of the few highest-earning modern foreign languages in the globe.

Therefore, speaking German will be the spark that helps you take the next steps to become a market leader in whichever field you choose.

To continue studying German at A-level, students need to have a grade 6 or above at GCSE.



NEED MORE INFORMATION?

Speak to your German teacher or alternatively email Miss McCabe: emccabe@townleygrammar.org.uk

“

STUDENT VOICE

“In Year 9, I decided to continue with German as it is, despite challenging, very rewarding. What I enjoy the most about the language is that the word order is like solving a puzzle; the culture of Germany itself also appealed to me greatly. Learning German now has opened the possibility for me to study in Germany in the future, where most universities offer free tuitions!”

“Great to learn and allows you to both develop creative and logic skills while gaining a knowledge of a language key to international commerce and one that will help you greatly in life.”

“Fun and it is always useful to learn another language. There are loads of fun trips and it is easy as long as you learn your vocabulary. It's more similar to English than other languages and also opens up careers such as working with businesses like Audi, Lidl, Daimler, BASF and many more.”



Spanish (AQA)



SUBJECT INFORMATION

A GCSE course in Spanish allows students to develop their ability to understand the spoken and written language and express themselves both orally and in writing. The topics studied include: identity and culture; local, national, international and global areas of interest; current and future studies and employment.

Students' skills will be developed through a variety of activities, including giving presentations, group work, independent research, pair work and the use of ICT. Students will need to be prepared to develop their active and passive vocabularies and their knowledge, understanding and application of grammar. The Spanish department have run many trips, including to Barcelona and Argentina, and there is the opportunity to take part in events such as the study days at the British Film Institute and Career Fairs.



ASSESSMENT

Please note that your child will be sitting a new GCSE specification, with first exams commencing in 2026.

Paper 1: Listening exam – 25% of GCSE

Section A – listening comprehension questions in English, to be answered in English

Section B – Dictation where students transcribe short sentences

Paper 2: Speaking exam – 25% of GCSE

- Speaking using clear and comprehensible language to undertake a role-play, - Carry out a reading aloud task in Spanish, - Talk about visual stimuli

Paper 3: Reading exam – 25% of GCSE

Section A – reading comprehension questions in English, to be answered in English

Section B – translation from Spanish into English

Paper 4: Writing exam – 25% of GCSE

- Writing text in the language in a lexically and grammatically accurate way in response to simple and familiar stimuli, -Translating from English into Spanish



RELATED CAREERS / A-LEVEL PROGRESSION

Spanish is the second most spoken language in the world with more than 400 million native speakers. With an ever-increasing presence in the global market, Spanish is becoming a business necessity with more and more workplaces in the UK and abroad recruiting Spanish speakers.

In addition to this, the Spanish language is growing in popularity and becoming an increasingly influential part of Hispanic popular culture. Students who study Spanish at university move on to successful careers in a variety of sectors including Business, Finance, Law, Sales and Marketing, Engineering, Tourism, Leisure, Public Sector, International Institutions, Teaching (Primary and Secondary), Translating, Interpreting and the Media.

To continue studying a language at A-level, students need to have a grade 6 or above at GCSE.



NEED MORE INFORMATION?

Speak to your Spanish teacher or alternatively email Miss McCabe: emccabe@townleygrammar.org.uk

“

STUDENT VOICE

'Spanish is spoken in many countries around the world which I would love to visit sometime in the future. Speaking Spanish is also important to me as it is becoming an increasingly useful skill to have in employment.'

'I chose to study Spanish because it teaches transferable skills such as multi-tasking and also enables you to further understand how languages work, including English. Spanish is the 2nd most spoken language in the world so you can communicate with a large amount of people when travelling. Speaking Spanish will also give me an edge and an advantage in any future career I decide to pursue.'

'I believe that Spanish is a language that is not only beautiful and fun but also facilitating. Learning a language opens your mind to other cultures and to many possibilities and opportunities in the working world.'



Computer Science (OCR)



SUBJECT INFORMATION

GCSE Computer Science is relevant to the modern, changing world and designed to boost the computing skills essential for 21st century. Computing influences and affects everything we do from Science to Manufacturing to Research or Medicine just to name a few. During this course you will have the opportunity to study the depths of the single most powerful tool the world has seen, which will certainly provide a great future for you. You will investigate how computers work, with the emphasis on 'Computational Thinking', which will help you to gain the diverse skills linked with problem solving. These skills result from studying the nature of computation through the ability to think logically, algorithmically and recursively. The course also allows you to enhance some obviously important skills you already have from the ability to explain, to be creative, work in a team and understand people. Computer Science is unique in the way it brings these diverse skills together and also encourages mental versatility, where you will use your new-found programming skills on an independent coding project by solving a real-world problem of your choice.



ASSESSMENT

The specification follows the criteria outlined below:

Component 01 - Computer Systems (50% of the total GCSE)

Just how do computers work? How can we keep safe whilst using computers? This first component is an exam focused on computer systems covering the physical elements of computer science and the associated theory

Component 02 - Computational Thinking, Algorithms and Programming (50% of the total GCSE)

How can we get computers to solve problems? How do computers run and store the programs we write? This component is focused on the core theory of computer science and the application of computer science principles.

Programming in action!

You will be given the opportunity to undertake a programming task(s), either to a specification or to solve a problem during your course of study. This part will challenge you to apply the knowledge and skills you have learned.



RELATED CAREERS / A-LEVEL PROGRESSION

This Computer Science qualification will, above all else, be relevant to the modern and changing world of computer science. Computer Science is a practical subject where you can apply the knowledge and skills learned in the classroom to real-world problems. It is an intensely creative subject that involves invention and excitement. This qualification values computational thinking, helping you to develop the skills to solve problems and design systems that do so. You will be equipped with lifelong skills that you can use in a whole variety of A-level courses, including A-level Computer Science, as well as enabling you to work in Technology companies large and small anywhere in the world.

To do A-level Computer Science you will need to achieve a grade 6 in GCSE Computing/Mathematics.

NEED MORE INFORMATION?



Talk to your present Computing teacher or email Mrs Amodu: mamodu@townleygrammar.org.uk

SELECTION CRITERIA IN THE EVENT OF OVER SUBSCRIPTION:

Year 9 progress checks, effort, behaviour and attainment grades for Computer Science will be taken into account.

“

STUDENT VOICE

“Computer Science is an integral subject, especially with many jobs becoming automated with robots and software engineering. I believe that the skills gained from taking this subject at GCSE are vital in everyday life, such as problem solving, creativity and critical thinking. I personally enjoy this subject a lot, as it allows you to efficiently solve problems and the content covered in the specification is very up to date and useful. I especially enjoyed learning about the CPU and RAM/ROM. I think it is a very good subject and I recommend it to those with a passion for problem solving.”



Design and Technology (AQA)



SUBJECT INFORMATION

GCSE Design and Technology will prepare students to participate confidently and successfully in an increasingly technological world. Students will gain awareness and learn from wider influences on Design and Technology including historical, social, cultural, environmental and economic factors. Students will have the opportunity to work creatively when designing and making and apply technical and practical expertise. Design and Technology allows students to study core technical and designing and making principles, including a broad range of design processes, materials techniques and equipment. They will also have the opportunity to study specialist technical principles in greater depth to prepare them for the world of work and university.

Design and Technology is a practical and valuable subject. It enables students to actively contribute to the creativity, culture, wealth and well-being of themselves, their community and their nation. It teaches how to take risks and so become more resourceful, innovative, enterprising and capable.

The core of the Design and Technology course is creativity and imagination. Students learn to design and make products that solve genuine, relevant problems within different contexts whilst considering their own and others' needs, wants and values. To do this effectively, they acquire a broad range of subject knowledge and draw on additional disciplines such as Mathematics, Science, Engineering and Computing.



ASSESSMENT

Written exam:

- 2 hours, 100 marks, 50% of GCSE
- Questions Section A – Core technical principles (20 marks)
- Section B – Specialist technical principles (30 marks)
- Section C – Designing and making principles (50 marks)

Coursework:

- 30–35 hours approx., 100 marks, 50% of GCSE
- Non-exam assessment (NEA):
- Contextual challenges to be released annually by AQA on 1 June in the year prior to the submission.
- Students will produce a working prototype and a portfolio of evidence (max 20 pages)



RELATED CAREERS / A-LEVEL PROGRESSION

Industrial Design, Product Design, Graphic Design, Engineering, Medical Product Design, Teaching, Architecture, Film Set/Theatre Design, Special Effects Development, Property Development and Interior Design.



A-level entry requirements : Students must gain grade 6 or above to take Product Design at A-level.

NEED MORE INFORMATION?

Email Mr Quinn at jquinn3.303@townleygrammar.org.uk

SELECTION CRITERIA IN THE EVENT OF OVER SUBSCRIPTION:

If oversubscribed, the student's Year 9 grades will be taken into account.

“

STUDENT VOICE

I would say Design Technology is one of my favourite subjects as you are able express and develop your creativity. I can transfer my ideas but also what I have learnt in lessons, directly into physical projects by designing my own product. I think the main difference between KS3 and GCSE D.T is the fact that you are able to be more independent and express your innovative ideas more freely. I would really recommend taking GCSE D.T if you want to show your creative side whilst learning new skills.



Engineering (AQA)



SUBJECT INFORMATION

As a school with a STEM specialism we recognise the importance of Engineering. Currently, approximately 50% of qualified engineers needed by industry are educated in the UK. Within this 50%, we recognise the shortage of female engineers (the UK has the lowest rate in Europe). As a school we wish to address this and inspire young woman into engineering and the amazing opportunities a career in engineering holds. Why Study Engineering? The sky's the limit. Engineering is an increasingly innovative and exciting area to work in. It affects every aspect of modern life – from cars to carrier bags, skyscrapers to smart phones. The GCSE introduces students to a host of new technologies, helping them to gain practical skills and understanding to inspire a lifelong interest in engineering. It will particularly appeal to those who enjoy being creative, with an affinity for drawing, design, Science, Mathematics and problem-solving.



ASSESSMENT

| | | |
|---|--------------------------|--|
| Question paper: Externally assessed | What's assessed: | Sections 1–6 from the subject content. Though the 'Practical engineering skills' section will predominantly be assessed through the NEA, some questions in the written exam will relate to practical contexts and students will need to apply their understanding within these contexts. |
| | How it's assessed | Written exam: 2 hours, 120 marks, 60% of GCSE |
| | Questions | Multiple choice questions assessing breadth of knowledge. Short answer questions assessing in depth knowledge, including calculations. Multiple choice questions related to the application of practical engineering skills. Extended response questions drawing together elements of the specification. |
| Non-exam assessment: Practical engineering | What's assessed | Application of skills, knowledge and understanding in a practical context. Analysis and evaluation of evidence. |
| | How it's assessed | Brief set by AQA released on 1 June in the first year of study. 80 marks, 40% of GCSE. |
| | Questions | Students produce: Engineering drawings or schematics to communicate a solution to the brief. An engineering product that solves a problem. |



RELATED CAREERS / A-LEVEL PROGRESSION

In Engineering we apply physics and math's into solving real world problems and this relates to all areas of Engineering from civil to medical apart from chemical Engineering, it also strongly supports careers in Electronics, Architecture and computer science.

A-level entry requirements: Students must gain grade 6 or above to take Product Design at A-level.



NEED MORE INFORMATION?

Email Mr Quinn on jquinn3.303@townleygrammar.org.uk

SELECTION CRITERIA IN THE EVENT OF OVER SUBSCRIPTION:

High Achievers in Physics then the other sciences.

“

STUDENT VOICE

“Engineering is an amazing subject. Engineering is not the same as DT, it is quite different. If you would like to go into a career in engineering, architecture, or other structural design based careers, it is a great subject to take. You can learn how many things work and it's insightful into the design and intricacies of everyday life. It is just so creative and allows you to apply science into a practical subject. A lot of the theory is covered in science so learning it is not as much work. The best part is showing the unique things you make.”

THE DUKE OF
EDINBURGH'S AWARD

SUBJECT INFORMATION

Leading youth charity the Duke of Edinburgh Awards Scheme gives all young people the chance to develop skills for work and life, fulfil their potential and have a brighter future. The nationally recognised award creates opportunities for personal development, independence, social and team working skills. Achieving an award will give students skills and confidence, which are looked upon favourably by colleges, universities and employers. Year 10 Bronze Award at Townley Grammar School involves team building, camp craft, cooking skills, nutrition skills, basic first aid skills, map navigation and compass skills.



ASSESSMENT

Bronze Award:

Volunteering must be completed for a minimum of 1 hour a week for a period of at least 3 months and then a minimum of 3 months on either Physical or Skills and 3 months on the other. Each one must be signed off by an appropriate supervisor of each of the sections.

- **Volunteering:** undertaking service to individuals or the community.
- **Physical:** improving in an area of sport, dance or fitness activities.
- **Skills:** developing practical and social skills and personal interests.
- **Expeditions:** Practice - 2 days and 1 nights
- **Qualifier** - 2 days and 1 nights

The expedition skills required will be covered in sessions delivered at school. There will be a compulsory session at lunchtime or after school that teaches camp craft, navigation skills, teamwork and route planning. The expedition section will be assessed through two separate overnight camping expeditions. These involve students planning a route independently with their group and carrying out this route to the campsite and then back to the finish the following day. Students are required to carry everything they need for the expedition on their back and prepare their evening meal on a Trangia (camping stove).



APPLICATION PROCESS AND PROGRESSION

Students will be required to complete an application form for the Bronze Award. Students will be selected through their application forms but also attendance, punctuality, behaviour, previous extra-curricular commitments and school reports will also be taken into consideration.



NEED MORE INFORMATION?

Please contact Mr Quinn - jquinn3.303@townleygrammar.org.uk Alternatively, for more information go to www.dofe.org

“

STUDENT VOICE

“The Duke of Edinburgh Bronze Award taught me a variety of skills including map reading, cooking and working as part of a team. This helped me in everyday life not only in the DofE assessments and I found it to be a valuable experience. During the course we came across numerous barriers that we had to overcome, especially during expedition. Luckily because we attended the weekly training sessions, we were well equipped to overcome this adversity and be resilient in our approach. It also allowed us to connect with people we would not usually socialise with therefore making us more confident individuals and I could say for sure that my confidence has improved through this programme. I would recommend this programme to anyone thinking of doing it, it is hard work but well worth it”.



Extra-Curricular Activities



Townley offers a variety of opportunities to be part of specialist clubs and societies. Whether your interests are in sport, dance, drama, music, science, mathematics, computing, poetry, literature or debating, to name but a few, there is something for everyone.

COULD YOU BE THE NEXT LEADER OR COMMITTEE MEMBER?

Do you have new ideas for existing clubs or even a suggestion for a completely new club at school or online? Just speak to a head of department to see how you could become one of our future club leaders and inspire students just like you!

Extra-Curricular and Character and Wellbeing (not part of our subject options)



Support for Studying GCSEs

SUPPORT FOR YOUR DAUGHTER AS SHE STUDIES HER SUBJECTS

We understand how studying GCSEs can be demanding and stressful at times. We have a team of capable House Tutors in our Pastoral Team, backed up by experienced colleagues in our Student Services Team and Learning Managers. At key points in the courses, we provide specialised workshops using outside speakers who provide advice and strategies for coping with stress, workloads, time-management, revision techniques and motivation techniques. Feedback from these sessions has been extremely positive and students leave the workshops with renewed energy and determination.

CAREERS GUIDANCE

The Careers Guidance Centre is a thriving hub of careers activity. The centre boasts an impressive Student Careers Hub that offers a comprehensive range of free resources, reference items and professional careers literature covering all options at each stage in a student's life. There are a variety of external agencies and platforms that can provide careers advice including Unifrog, the universal, user-friendly, destinations platform that helps students compare every university course, every apprenticeship, and Further Education courses. All students will receive career and learning journey information as part of their character and wellbeing programme throughout the year.

There are a number of other careers initiatives including:

- The annual Careers Fair
- National Apprenticeship Week
- Careers Focus Week
- Oxbridge Evening
- Higher Education Evening

The highly regarded Townley Leadership Programme - a dedicated and progressive leadership programme for Sixth Form students.

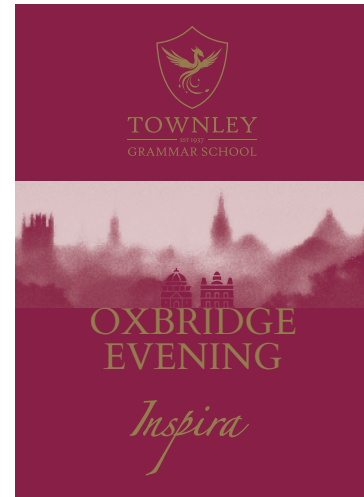
A variety of career workshops and talks take place throughout the year and many of these are from organisations with whom we have strong working links such as Barclays, KPMG, NHS and the National Youth Theatre.

GCSE POD

Townley is also subscribed to GCSE Pod: an extremely comprehensive gateway to an excellent array of useful learning and revision materials for a large variety of GCSE courses across examination boards, which is kept current for the recent changes. Students in Year 10 and 11 have access to this and have found it extremely useful for revision and extending their knowledge.

EDGE

In Year 9 students begin their journey in terms of EDGE - Explore, Discover, Grow and Engage. This is an integral part of the holistic approach which we take in relation to study at Townley Grammar School. The programme will continue throughout Years 10 and 11, with the opportunity for participation in parental workshops. This bespoke programme is designed to support our students and also encourage parental participation and enable you to support your daughters in the next key stage of their academic progress.



Character and Wellbeing

The character and wellbeing of our students is fundamental to the fabric of Townley school life. The school has been “Highly Commended” by the DfE for its “Innovative and consistent approach” towards Character Education. As part of our wider provision.

All Townley students have timetabled Character and Wellbeing lessons on their timetable for 35 mins each week. The purpose of these sessions is to comply fully with Department for Education statutory guidance on PSHE, including Relationships and Sex Education and to further develop the character, enhance the physical and mental health of our students and help them learn how to make safe and wise decisions in life.

CWB TOPICS:

Mental Health and Wellbeing

RSE - Including women’s rights, Honour based violence, FGM and forced marriage; Coercive and controlling behaviour; LGBT rights; Consent in relationships; healthy relationships including online; abstinence, asexuality and celibacy

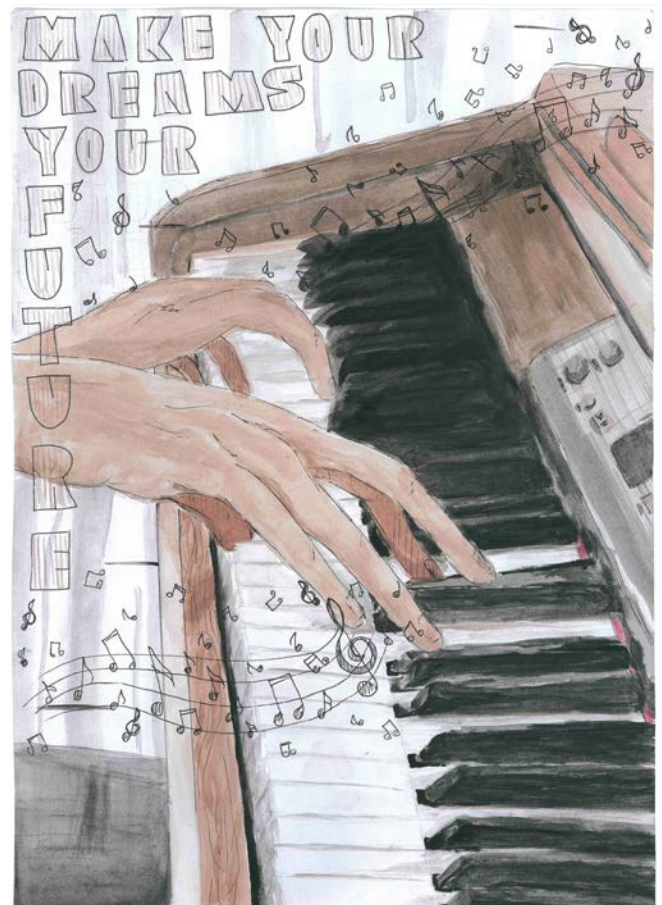
Addiction - including alcohol, smoking, drugs, gambling

Careers

Money Matters - including debt and interest, APR, interest rates; Mortgages, student loans, credit cards; Credit Rating; Payday loans, high interest lending.



Lathikka 9 Demeter



Tannik 9 Demeter



TOWNLEY 21c

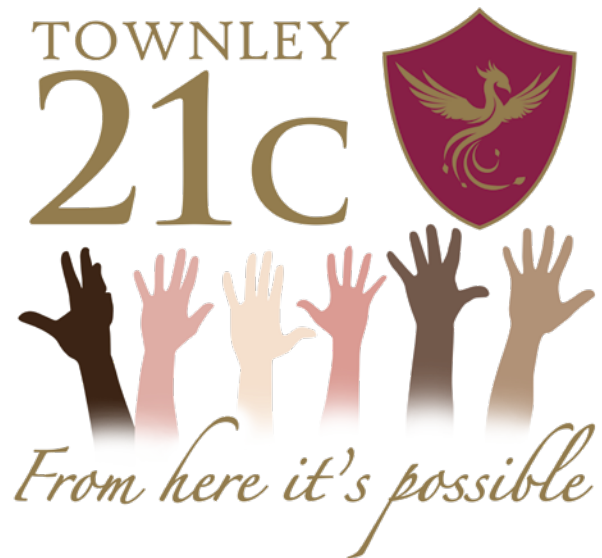
Townley 21c curriculum

Townley has developed a new curriculum that prepares students for the 21st century and ever-changing world. We have called this new curriculum Townley 21c. Townley21c is guided by a desire to further enhance our students' capacity to:

- Understand the world around them
- Question existing ideas
- Communicate clearly and creatively
- Engage with the 21st century's emergent opportunities

What do the 21c sessions consist of?

Townley 21c is a combination of the classical with the modern; applying the traditional values of Trivium (Grammar, Rhetoric and Logic) to the realities of the modern, digitalised world (Future Schools) through innovative curriculum planning and educational research. The 21c journey will provide students with an additional breadth of knowledge and holistic opportunities that further enrich their educational experience and provide a unique, bespoke experience for Townley students. Students will be given the opportunity to explore fundamental questions arising from the changing world around them and formulate a response, though the form and format of their responses are not pre-determined, encouraging them to bring their passions and creativity to the formulation and presentation of their responses.



— BE A —
BETTER PART
 — OF —
SOMEONE'S
 — DAY —



KIND: (adj.) of an ATTENTIVE, HELPFUL,
 or GENEROUS nature

— HOW TO —
WORK KINDLY

Empathise

Put yourself in someone else's shoes; consider how your words and actions make others feel.

Make wise choices

You always have choices in how you respond to someone/thing. Pause. Think. Choose helpful.

Remove the ego

Let go of any entitlement and remember your work is always about making things better for someone else.



TOWNLEY GLOBAL



A number of trips and visits are organised each year to complement and enhance the Curriculum offered at Key Stage 4 and 5.

INTERNATIONAL PARTNERSHIPS



Germany



France



China



Japan



Thailand



India



India



France



China



TOWNLEY
EST 1937
GRAMMAR SCHOOL

KEY STAGE FOUR CURRICULUM 2024-25

Email: admin@townleygrammar.org.uk

Tel: 020 8304 8311

Twitter: [@TownleyGrammar](https://twitter.com/TownleyGrammar)

Website: www.townleygrammar.org.uk

Address: Townley Grammar School, Townley Rd, Bexleyheath DA6 7AB