

TOWNLEY

Inspire 2019

TOWNLEY GRAMMAR SCHOOL
FRIDAY 8th NOVEMBER 2019

Facilitating innovative partnerships to guide
the future development of education

The Townley Inspire 2019 conference will welcome all, from trainee teachers to senior leaders, higher education representatives, educational researchers, charitable organisations, mental health campaigners and highly distinguished keynote speakers. Alongside the opportunity to engage with a range of inspirational ideas concerning wellbeing, leadership, character education and staff retention, Townley Inspire also encourages networking opportunities, facilitating innovative partnerships to guide the future development of education.

Programme for the day



8.15am - 9.10am Registration

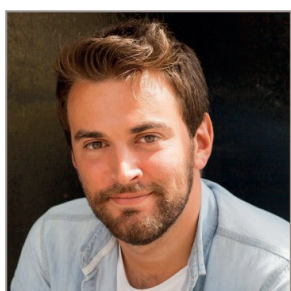


9.15am - 9.30am Gary Lewis

Gary is the Chair of the Association for Character Education (The Character Education Subject Association). He was also Head Teacher at Kings Langley Secondary School in Hertfordshire. In 2002 the school was categorised as being in the bottom 2% nationally so Gary devised a long term strategy for the school's recovery that was entirely focused on developing "strong character" in both students and teaching staff alike. Recently, Ofsted stated that the "...outstanding" attitudes and behaviour of the students" were attributable to the school's complete immersion in reinforcing character, resilience and

moral virtue in all aspects of the school's work and curriculum.

Gary is currently the Executive Headteacher at Kings Langley and a policy advisor on Character Education to the Department for Education. He has also recently been appointed as a honorary Research Fellow at the Jubilee Centre at the University of Birmingham, a leading international organisation in terms of leading research and developing resources for Character Education in schools and in other institutions.



9.30-10.15 Jonny Benjamin (MBE)

Jonny Benjamin is an award-winning mental health campaigner, film producer, public speaker, writer and vlogger. At the age of 20 he was diagnosed with schizoaffective disorder, a combination of schizophrenia and bipolar, and later began making films on YouTube about the condition that have been watched by millions of people.

Jonny now speaks publicly about living with mental illness and has written articles and given various interviews on TV, radio and in print around the world to help educate and break stigma. He has also produced and presented documentaries on BBC Three and Channel 4 on the subjects of mental health and suicide.

His 2014 social media campaign with Rethink Mental Illness to #findMike, the man who talked him out of jumping off a bridge when he was suicidal, went viral and led to Jonny becoming a prominent spokesperson on the subject of suicide.

In 2016 Jonny launched ThinkWell, a mental health programme for schools. Jonny spent 2017 writing the first of 2 books on mental health and in 2019 Jonny launched his new mental health charity, 'Beyond Shame Beyond Stigma'. This is a grant-giving organisation which aims to provide mental health support to young people, their families and teachers.



10.15am – 11.00am Dr Karen Edge

Dr. Karen Edge recently served as Pro-Vice-Provost (International) at UCL and Reader in Educational Leadership at UCL Institute of Education.

Karen led the ESRC-funded Global City Leaders Project working with school leaders in London, New York and Toronto to understand how the new generation of leaders are experiencing their careers, leadership and future aspirations. In turn, Karen and the team actively engage in research and policy advocacy to inform how education systems and cities can create new strategies to bolster the recruitment, development and retention of school leaders.

Karen is an Advisory Panel member for International School Leadership Principals. She has been a visiting academic in Canada, Malaysia and Chile and served as Editor-in-Chief of Educational Assessment Evaluation and Accountability.

Before joining UCL IOE, Karen worked in senior advisory and research roles for the Minister of Education (Ontario) and the World Bank (Washington, DC). Karen consults domestically and internationally with organisations on strategy, leadership and research topics. Partners include Local Authorities, the Department for Education (UK), ActionAid/Gates/Hewlett Foundations and STIR Education.

11.00am – 11.30am Break



11.30am – 12.15pm Dr Emma Kell

Dr Emma Kell has 20 years of experience as a teacher and was a Head of English with senior leadership experience at a school in North London. Emma writes extensively on school leadership and the pressures of teaching, and has recently completed a doctorate on teacher well-being and work-life balance. She is the author of 'How to Survive in Teaching: without imploding, exploding or walking away' and frequently

writes articles for the TES on a range of relevant educational topics. Emma is founder and director of 'Those That Can Limited', working to inspire teachers and keep them happily in the profession.



12.15pm – 1.00pm Elizabeth Wright

Elizabeth was a Paralympic swimmer for Australia and walked away with 3 Paralympic medals and a drive to help other people thrive in their own lives. She then attended university in Australia, achieving a 1st Class Honours in a Bachelor of Fine Arts degree and a Master of Philosophy (Fine Art) degree.

Having moved to the UK, Elizabeth pursued a speaking career, focusing on schools. This has since evolved and she now runs a character education programme called

RWS | Resilience Wellbeing Success. Through this she aims to help pupils thrive in all aspects of their lives; the programme is a comprehensive, evidence-based approach to resilience and wellbeing, and includes fun activities that engage and motivate. Elizabeth is now studying for a Masters in Character Education, which informs not just RWS, but also her own speaking and wider life experience.

1.00pm – 2.00pm Lunch

Please note that we ask everyone to be seated and ready for a prompt 9.15am start.

The conference will be held at:

Townley Grammar School, Townley Road, Bexleyheath, Kent DA6 7AB.

Tickets are charged at a nominal rate of £30 per person and can be reserved from the link below.

<http://buytickets.at/townleygrammarschool/302779>

Please note that tickets are limited and we therefore suggest you book early to avoid disappointment.

We are unable to provide parking facilities on the school site for such a large number of guests. However, there is some free parking in surrounding residential areas such as Arbuthnot Lane. You are advised to check carefully in residential areas as some streets have restrictions. Alternatively, you can park at the Broadway shopping centre car park in Bexleyheath, which is a 10 minute walk from the school.



Address: Townley Grammar School, Townley Road, Bexleyheath, Kent DA6 7AB.

Tel: 020 8304 8311 | **Email:** admin@townleygrammar.org.uk | **Web:** www.townleygrammar.org.uk